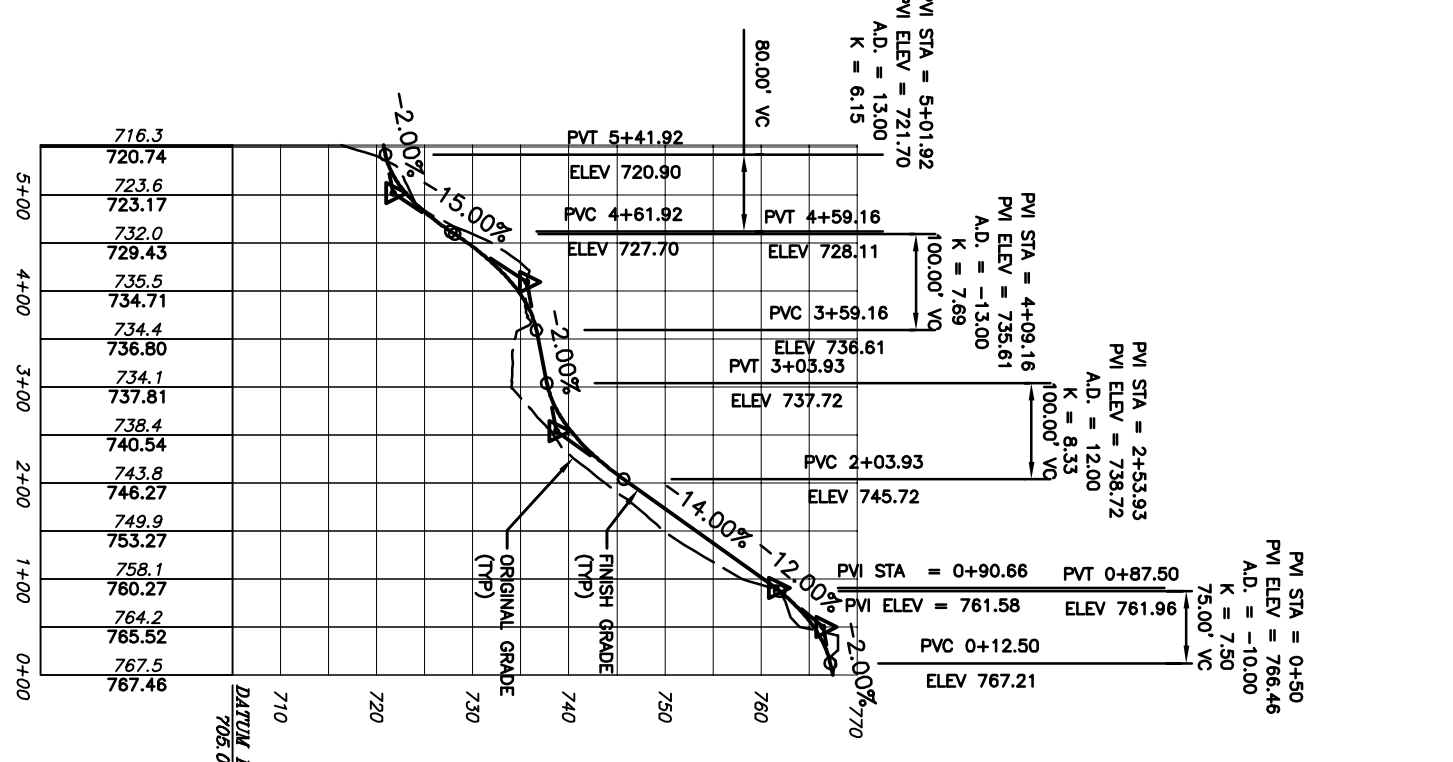
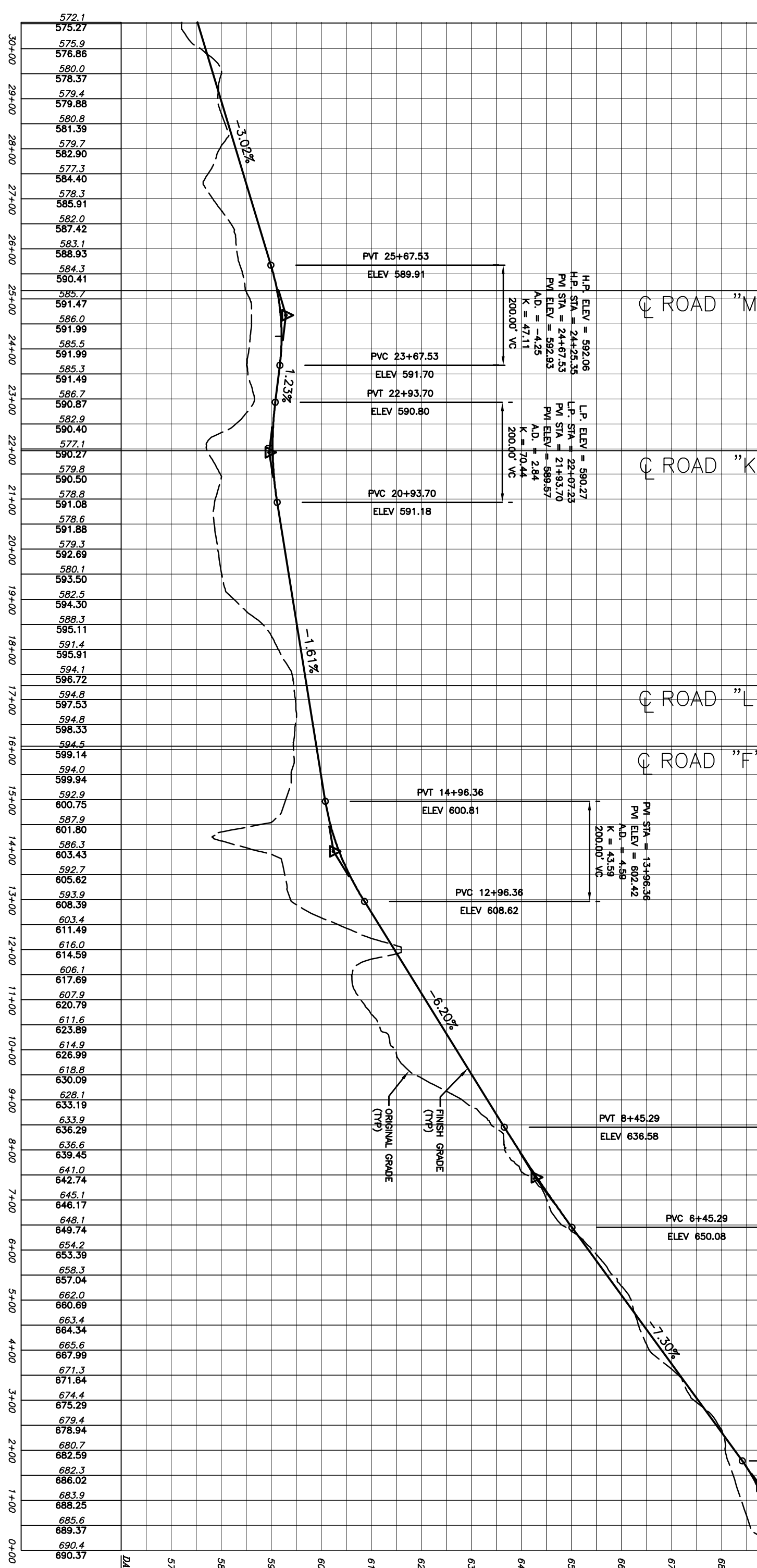


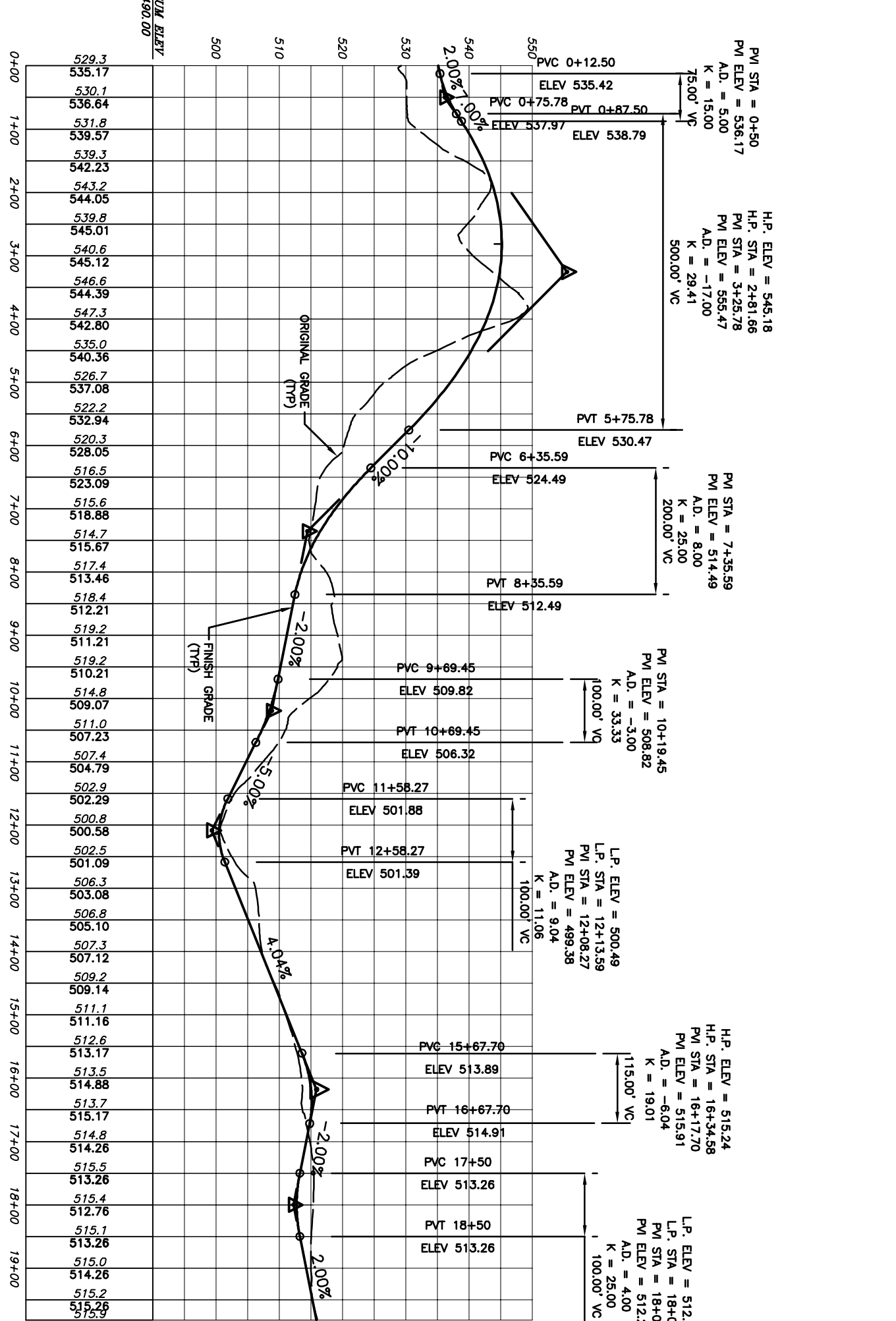
ROAD "C"
SCALE: HORIZ 1"=200'
VERT 1"=20'



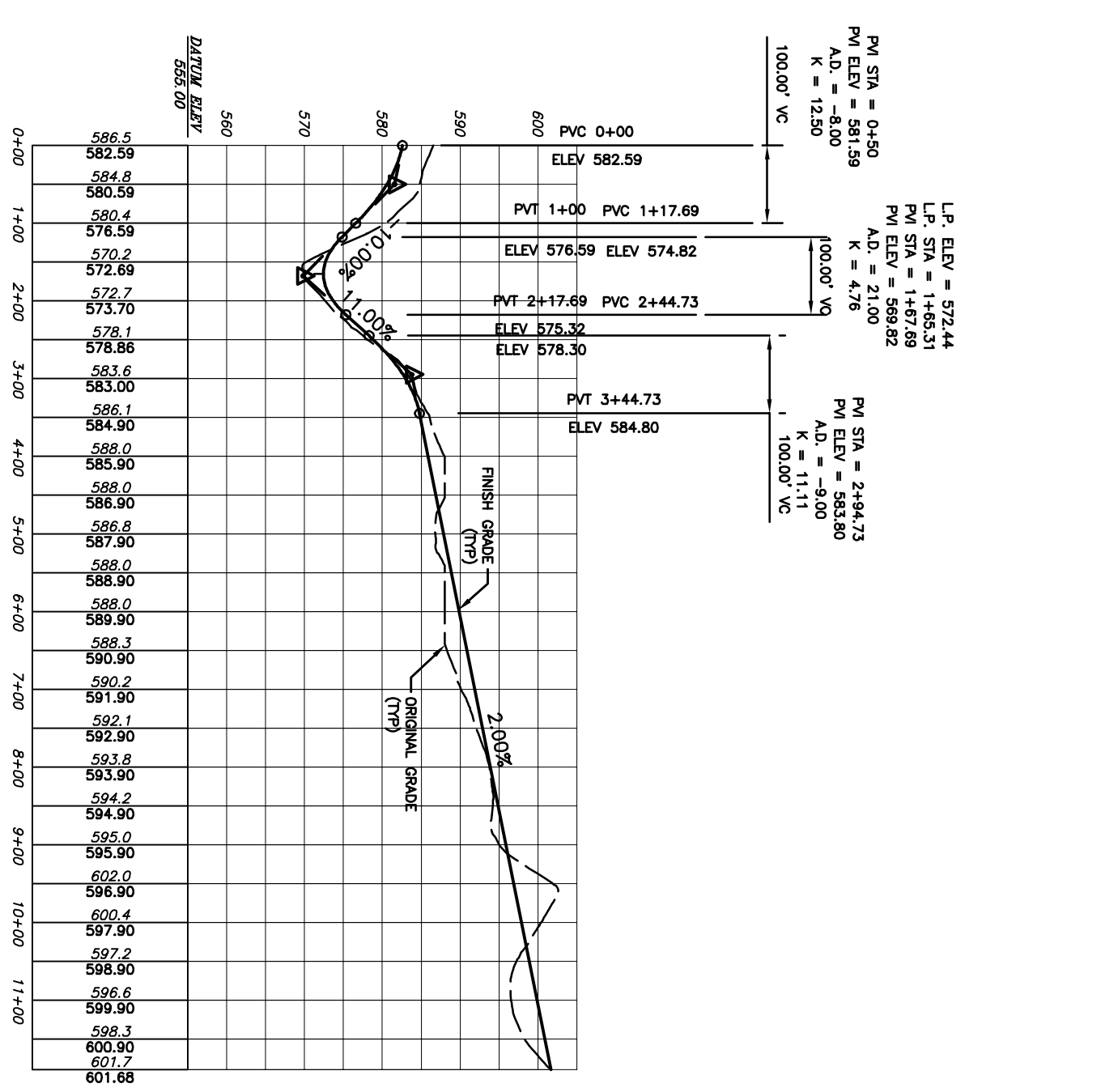
ROAD "D"
SCALE: HORIZ 1"=200'
VERT 1"=20'



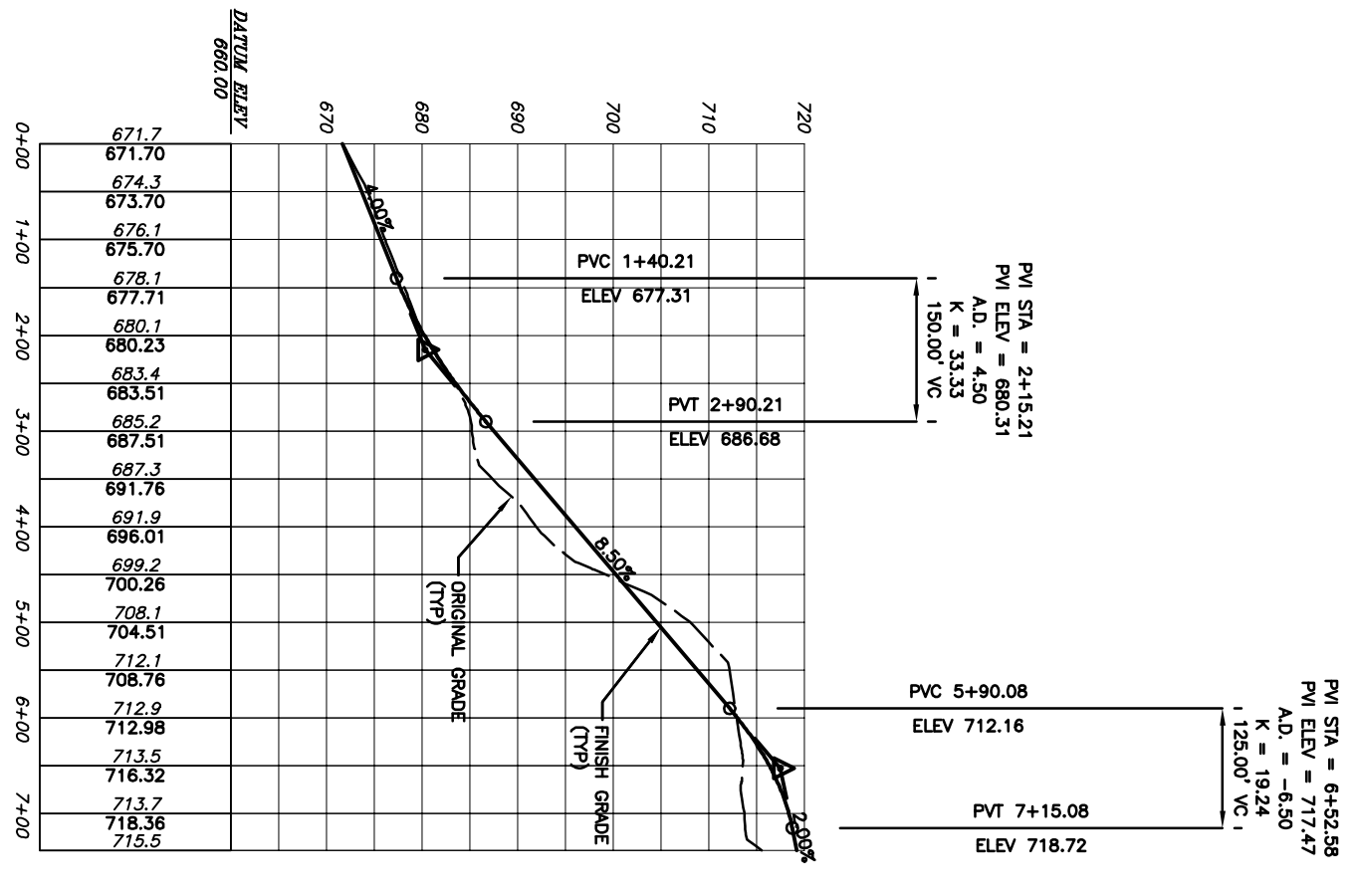
ROAD "E"
SCALE: HORIZ 1"=200'
VERT 1"=20'



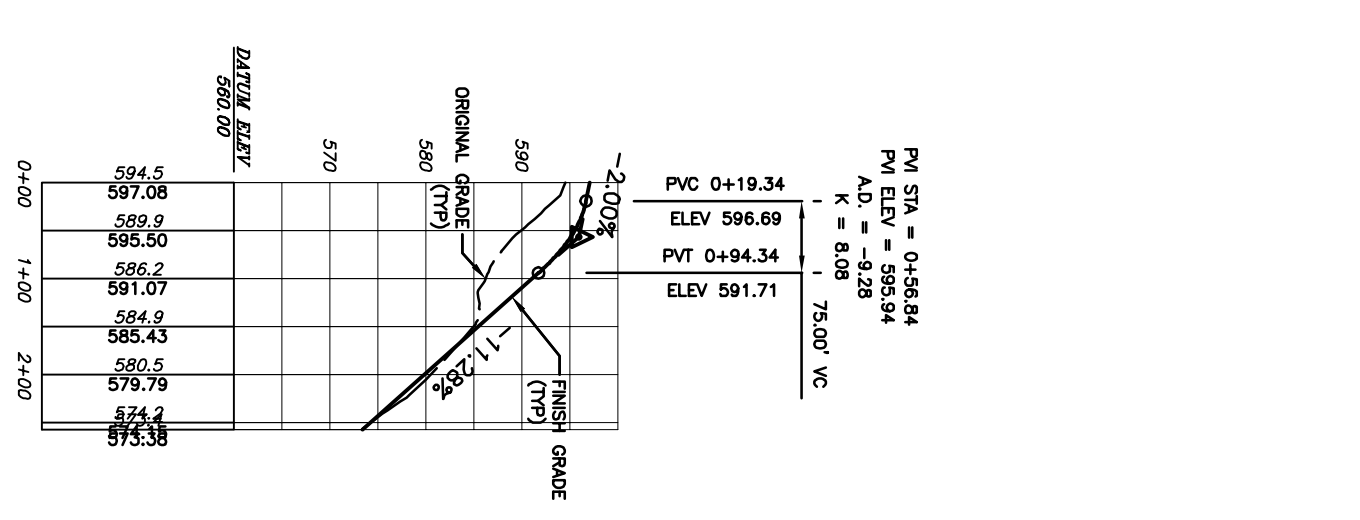
ROAD "H"
SCALE: HORIZ 1"=200'
VERT 1"=20'



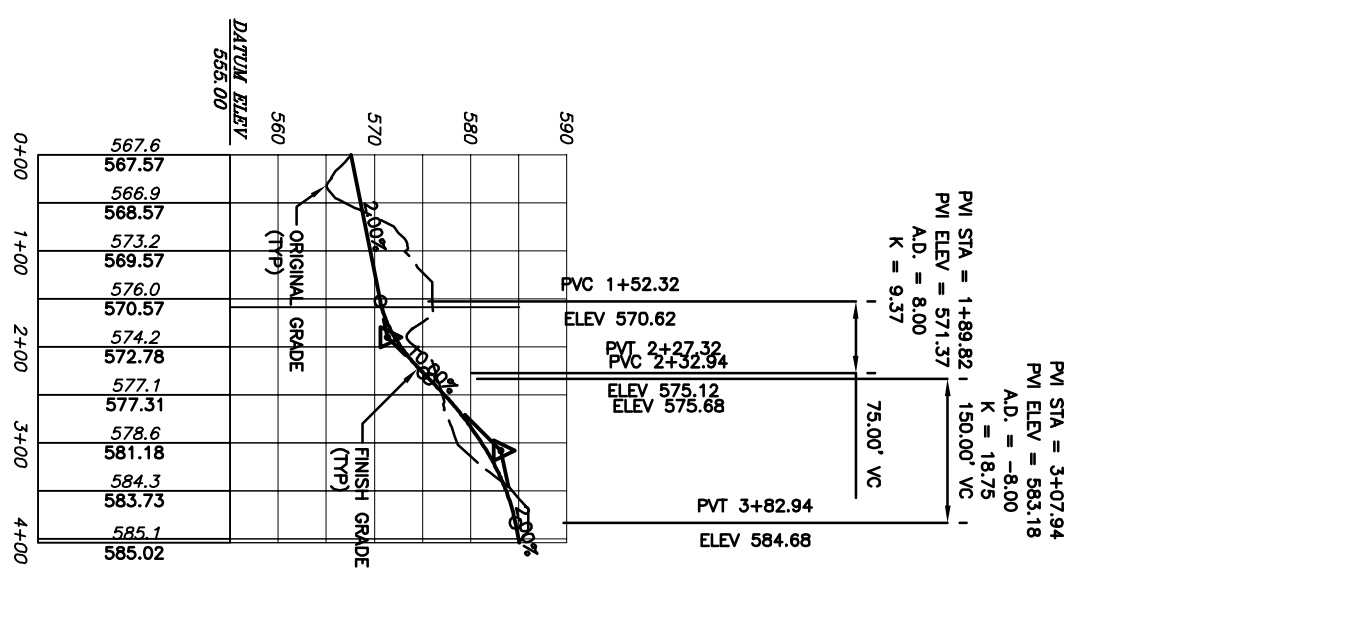
ROAD "I"
SCALE: HORIZ 1"=200'
VERT 1"=20'



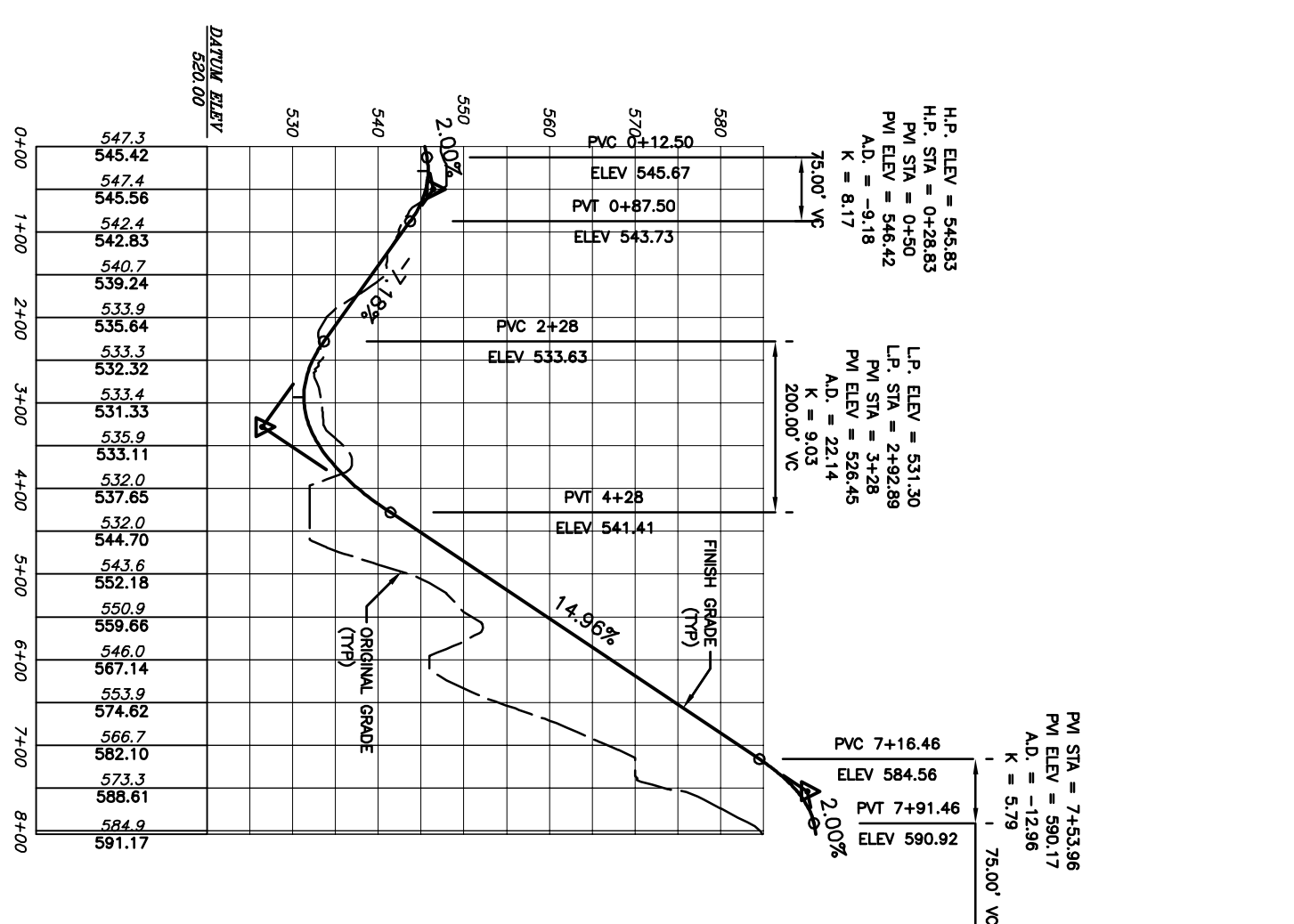
ROAD "J"
SCALE: HORIZ 1"=200'
VERT 1"=20'



ROAD "K"
SCALE: HORIZ 1"=200'
VERT 1"=20'



ROAD "L"
SCALE: HORIZ 1"=200'
VERT 1"=20'



ROAD "F"
SCALE: HORIZ 1"=200'
VERT 1"=20'

REVISION NO.	DATE	REVISION
1	10/20/07	REV. SUBMISSION
2	10/20/07	REV. SUBMISSION

NOTICE:
THIS DRAWING AND ALL INFORMATION CONTAINED HEREIN IS AUTHORIZED FOR USE ONLY BY THE PERSON TO WHOM IT IS ISSUED. ANY OTHER USE, REPRODUCTION, OR TRANSMISSION OF THIS DRAWING WITHOUT THE WRITTEN CONSENT OF SCHOOR DEPALMA, INC. IS PROHIBITED.
COPYRIGHT © 2008 SCHOOR DEPALMA, INC. ALL RIGHTS RESERVED.

W. CHARLES UTSCHIG, JR.
PROFESSIONAL ENGINEER, N.Y. LIC. NO. 62303

SCHOOR DEPALMA
Engineers and Consultants

1311 MAMARONECK AVENUE
SUITE 11605
WHITE PLAINS, NY 10606
TEL (914) 686-1000
FAX (914) 686-1222

BASHER KILL SUBDIVISION
ORANGE COUNTY HOLDINGS LLC
ORANGE COUNTY
NEW YORK

PROJECT NO.	DATE
0403734	09/29/06
DRAWN BY	DESIGNED BY
M.D.M.	K.C.
CHECKED BY	DATE
A.S. SHOWN	D.M.
SHEET NO.	
42	of 47